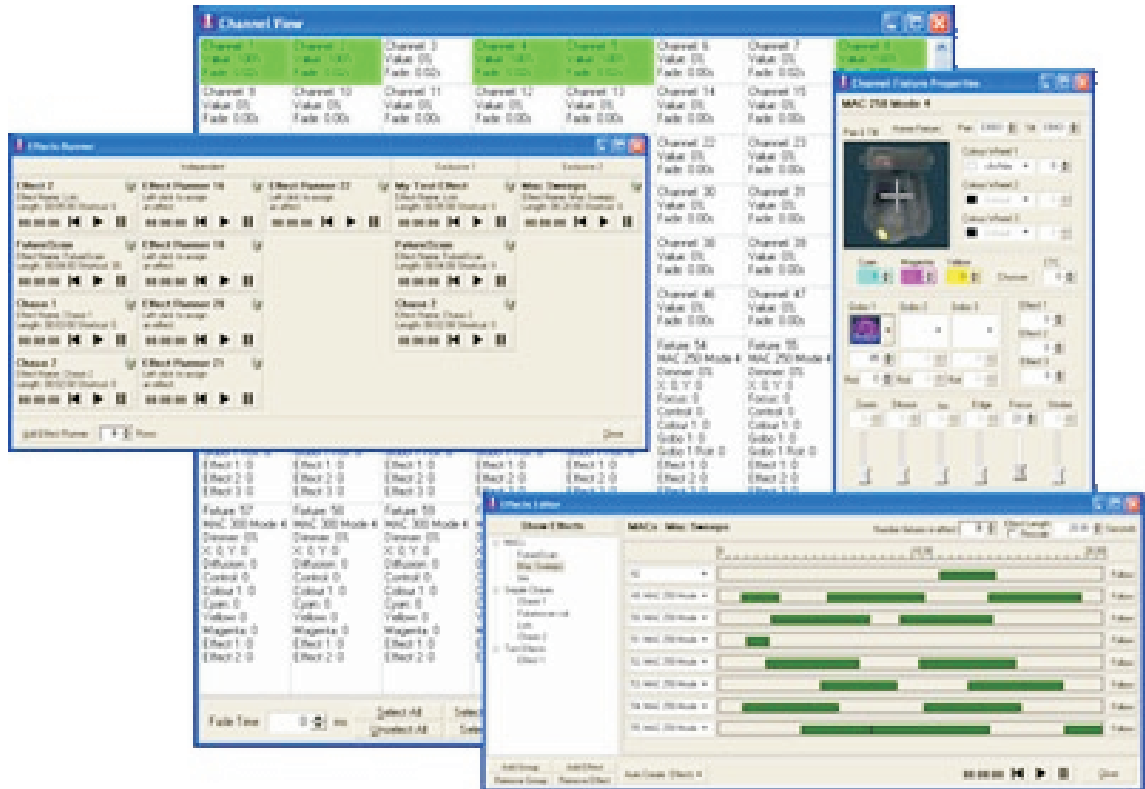


ENTTEC LIGHTFACTORY

The unique PC based Lighting control



CLOSE THE GAP

RELIABLE

FOR EVERY SITUATIONS

YOUR OWN CONTROL DESK

ENTTEC

Entertainment Technology

WWW.ENTTEC.COM

ENTTEC Lightfactory is a unique PC based lighting control system. Offering a no compromise approach of traditional dimmer control and fully featured moving light support.

Most PC based control systems focus on moving light support but lack the many features that make traditional lighting desks stand out. Lightfactory closes that gap.

LightFactory was designed with the idea that every lighting engineer, operator or designer could own their own control desk. One desk they are completely familiar with, one desk that works for every situation and one desk they can rely on every time.

Hardware:

- ENTTEC Lightfactory requires a DMXethergate MK2 , Datagate DME or the OPEN DMX USB device for outputting DMX.
- It will run on any windows (98/NT/2K,XP) based PC, a Pentium 3 is the recommended minimum.

Software versions available:

- LightFactory Limited Edition 36ch (included in DMXethergate MK2 & Datagate DME)
- Light Factory Basic: 512ch but limited features
- LightFactory 512ch
- LightFactory 1024ch
- Lightfactory 2048ch

Features:

- Up to 10 DMX universes (5120 channels)
- Up to 2000 lighting fixtures
- Traditional command line interface eg: "1+5 thru 20 @ 55 fade 20"
- Unlimited cues, cuelists, shows
- 3 different effects engine (timeline based, chase ,attribute based)
- SMPTE and MIDI Timecodes
- Full fixture library
- Audio input with full FFT signal analysis
- In built real time scheduler